



Shell Hood

Shell Hood in HiGlo Chest Length Replaceable Inner Window Buckle Closure

077-6537-****

Chest length Shell Hood in HiGlo having a replaceable curved window and a buckle closure.

Requires a valve belt sold separately

The Zip Clip and Hard Cap headgear option is featured in these photos.

Any asterisk () shown in an Item No. will be replaced with a combination of digits identifying all of the options selected.*

The Shell Hood has adjustable ratchet headgear attached to a sturdy fiberglass reinforced frame. Providing an excellent range of vision, the window is constructed of 40 mil vinyl permanently sealed to the hood with the use of a 17" X 8" cover window (20 mil thick) resting inside a snap-enclosed pocket for easy replacement. Underarm straps with plastic quick release fittings hold the front and rear bibs close to the body. A standard hang-up loop is included in the design for easy storage. Specially designed options include a perforated airline that provides airflow around the entire inside of the hood (some versions can accommodate a full-face airline respirator if needed) and the option to add headgear to accommodate a hard hat for additional protection. Available in chest length or waist length. The 077-4060 HiGlo Shell Hood design may be in stock and could ship within 2 business days. The remaining designs are manufactured to order.

Limitation of Liability

This information is based upon technical data that Standard Safety Equipment Company believes to be reliable. It is subject to revision as additional knowledge and experience are gained. Standard Safety Equipment Company makes no guarantee of results and assumes no obligation or liability in connection with this information. It is the user's responsibility to determine the level of toxicity and the proper personal protective equipment needed. The information set forth herein reflects laboratory performance of fabrics not complete garments, under controlled conditions. It is intended for information use by persons having technical skill for evaluation under their specific end-use conditions, at their own discretion and risk. Anyone intending to use this information should first verify that the garment selected is suitable for the intended use. In many cases, seams and closures have shorter breakthrough times and higher permeation rates than the fabric. Please contact the garment manufacturer for specific data. If fabric becomes torn, abraded, or punctured, end user should discontinue use of garment to avoid potential exposure to chemical. Since conditions of use are outside our control, we make no warranties, express or implied, including without limitations, no warranties of merchantability or fitness for a particular use and assume no liability in connection with any use of this information. This information is not intended as a license to operate under or a recommendation to infringe any patent or technical information of Standard Safety Equipment Company or others covering any material or its use.

Shell Hood in HiGlo Chest Length Replaceable Inner Window Buckle Closure

077-6537-****

Specs

Length-Shell Hood:	Chest Length
Fabric:	HiGlo
Closure-Shell Hood:	Buckle Closure
Units:	Each
Headgear-Shell Hood:	Available options: <ul style="list-style-type: none">• Ratchet Headgear• Ratchet Headgear and Extenders Available• Installed Hard Cap• Installed Hard Cap and Extenders• Zip Clip for Hard Cap• Zip Clip for Hard Cap and Extenders• Zip Clip and Hard Cap• Zip Clip, Hard Cap and Extenders
Window-Shell Hood:	125 mil Replaceable Curved Window
Curved Cover Window Replacement [ss]:	Available options: <ul style="list-style-type: none">• 077-1012-3000 - 40 mil Curved Cover Window
Additional Garment Options:	Available options: <ul style="list-style-type: none">• Imprinting

Related Products



Aluminum Retainer Frame with Plates for the Replaceable Inner Window

055-1237-1000

The Aluminum Retainer Frames secures the Replaceable Inner Window in place. The Plates connect with the locks to hold the window in the frame forming a tight seal.

Limitation of Liability

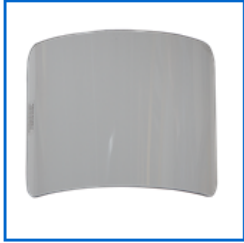
This information is based upon technical data that Standard Safety Equipment Company believes to be reliable. It is subject to revision as additional knowledge and experience are gained. Standard Safety Equipment Company makes no guarantee of results and assumes no obligation or liability in connection with this information. It is the user's responsibility to determine the level of toxicity and the proper personal protective equipment needed. The information set forth herein reflects laboratory performance of fabrics not complete garments, under controlled conditions. It is intended for information use by persons having technical skill for evaluation under their specific end-use conditions, at their own discretion and risk. Anyone intending to use this information should first verify that the garment selected is suitable for the intended use. In many cases, seams and closures have shorter breakthrough times and higher permeation rates than the fabric. Please contact the garment manufacturer for specific data. If fabric becomes torn, abraded, or punctured, end user should discontinue use of garment to avoid potential exposure to chemical. Since conditions of use are outside our control, we make no warranties, express or implied, including without limitations, no warranties of merchantability or fitness for a particular use and assume no liability in connection with any use of this information. This information is not intended as a license to operate under or a recommendation to infringe any patent or technical information of Standard Safety Equipment Company or others covering any material or its use.



Belt and Offset Valve Block with Fitting

145-1000-****

Belt with an adjustable valve block installed on the side for easy access by the wearer. Choose one of five fittings to include with the assembly. Photo is shown with Hansen fitting.



125 mil Replaceable Window

057-1858-3000

Our 125 mil non-flexing heat-curved Polycarbonate window is the only field-replaceable window. This window comes ready to be mounted on the aluminum frame of a shell-style hood designed for with the&n...



Contact Us:

Toll Free: (888) 345-4773

Phone: (815) 363-8565

info@standardsafety.com

www.standardsafety.com

Limitation of Liability

This information is based upon technical data that Standard Safety Equipment Company believes to be reliable. It is subject to revision as additional knowledge and experience are gained. Standard Safety Equipment Company makes no guarantee of results and assumes no obligation or liability in connection with this information. It is the user's responsibility to determine the level of toxicity and the proper personal protective equipment needed. The information set forth herein reflects laboratory performance of fabrics not complete garments, under controlled conditions. It is intended for information use by persons having technical skill for evaluation under their specific end-use conditions, at their own discretion and risk. Anyone intending to use this information should first verify that the garment selected is suitable for the intended use. In many cases, seams and closures have shorter breakthrough times and higher permeation rates than the fabric. Please contact the garment manufacturer for specific data. If fabric becomes torn, abraded, or punctured, end user should discontinue use of garment to avoid potential exposure to chemical. Since conditions of use are outside our control, we make no warranties, express or implied, including without limitations, no warranties of merchantability or fitness for a particular use and assume no liability in connection with any use of this information. This information is not intended as a license to operate under or a recommendation to infringe any patent or technical information of Standard Safety Equipment Company or others covering any material or its use.