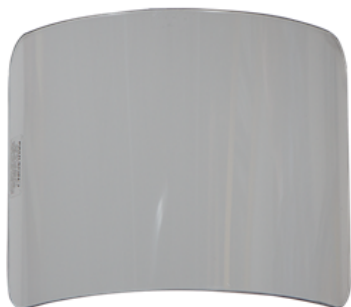


Specialty Windows

125 mil Replaceable Window

057-1858-3000



Our 125 mil non-flexing heat-curved Polycarbonate window is the only field-replaceable window. This window comes ready to be mounted on the aluminum frame of a shell-style hood designed for with the Replaceable Inner Window option. The replacement window measures 11" W X 7" H.

Any asterisk () shown in an Item No. will be replaced with a combination of digits identifying all of the options selected.*

Limitation of Liability

This information is based upon technical data that Standard Safety Equipment Company believes to be reliable. It is subject to revision as additional knowledge and experience are gained. Standard Safety Equipment Company makes no guarantee of results and assumes no obligation or liability in connection with this information. It is the user's responsibility to determine the level of toxicity and the proper personal protective equipment needed. The information set forth herein reflects laboratory performance of fabrics not complete garments, under controlled conditions. It is intended for information use by persons having technical skill for evaluation under their specific end-use conditions, at their own discretion and risk. Anyone intending to use this information should first verify that the garment selected is suitable for the intended use. In many cases, seams and closures have shorter breakthrough times and higher permeation rates than the fabric. Please contact the garment manufacturer for specific data. If fabric becomes torn, abraded, or punctured, end user should discontinue use of garment to avoid potential exposure to chemical. Since conditions of use are outside our control, we make no warranties, express or implied, including without limitations, no warranties of merchantability or fitness for a particular use and assume no liability in connection with any use of this information. This information is not intended as a license to operate under or a recommendation to infringe any patent or technical information of Standard Safety Equipment Company or others covering any material or its use.

125 mil Replaceable Window

057-1858-3000



Contact Us:

Toll Free: (888) 345-4773

Phone: (815) 363-8565

info@standardsafety.com

www.standardsafety.com

Limitation of Liability

This information is based upon technical data that Standard Safety Equipment Company believes to be reliable. It is subject to revision as additional knowledge and experience are gained. Standard Safety Equipment Company makes no guarantee of results and assumes no obligation or liability in connection with this information. It is the user's responsibility to determine the level of toxicity and the proper personal protective equipment needed. The information set forth herein reflects laboratory performance of fabrics not complete garments, under controlled conditions. It is intended for information use by persons having technical skill for evaluation under their specific end-use conditions, at their own discretion and risk. Anyone intending to use this information should first verify that the garment selected is suitable for the intended use. In many cases, seams and closures have shorter breakthrough times and higher permeation rates than the fabric. Please contact the garment manufacturer for specific data. If fabric becomes torn, abraded, or punctured, end user should discontinue use of garment to avoid potential exposure to chemical. Since conditions of use are outside our control, we make no warranties, express or implied, including without limitations, no warranties of merchantability or fitness for a particular use and assume no liability in connection with any use of this information. This information is not intended as a license to operate under or a recommendation to infringe any patent or technical information of Standard Safety Equipment Company or others covering any material or its use.